

The modular cleanroom concept

- Room-in-Room Concept
- Flexible Cleanroom Sizes
- Any Room Geometry

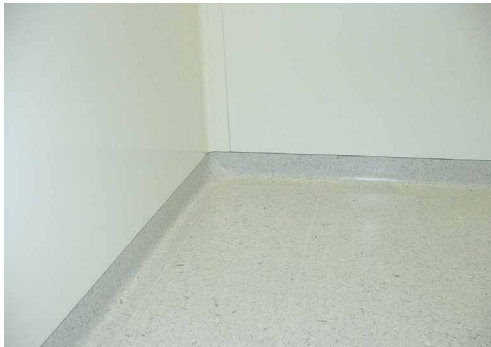


Clean Room Details

**cGMP, FDA, PIC Standard
for pharmaceutical and medical applications**

**ISO 14644 Standard
for semiconductor and industrial areas**

Hygiene and antistatic coverings with flush coving from wall to floor.



Raised Floor

Free access floor system consisting of perforated panels with conductive coverage. This system provides an under floor space which houses all media connections and return air channel.



Flush structure, made of panels. Material is coated steel, stainless steel or aluminium. Corners with flush coving. Safety glass windows can be integrated flush in a panel.



Wall System

Aluminium framed wall system AS46 with honeycomb or sandwich panels. Panels can be removed.



AS46 ceiling system with flush integrated HEPA filters and light fixtures.



Ceiling System

AS46 ceiling system with integrated HEPA filters and attached light fixtures.



Clean Room Design

SIT supplies turnkey cleanroom systems with state-of-the-art filtration and control technology. The concept is designed for use in the pharmaceutical, medical, semiconductor and industrial

sectors. The system is completely self-contained and can be equipped according to customer requirements.



Clean Room Specifications

according to cGMP, FDA, PIC Standard
for pharmaceutical and medical applications

Class		Particles per m ³		Air Exchange Rate	Room Pressure
cGMP, PIC	ISO 14644	0.3µm	0.5µm	[1/h]	[Pa]
A,B	~5	10'200	3'520	2.)	15
C	~7		352'000	20	15
D	~8		3'520'000	20	15

according to ISO 14644 Standard
for semiconductor field and industrial areas

Class		Particles per m ³		Air Exchange Rate	Room Pressure
ISO 14644	FED STD 209e	0.3µm	0.5µm	[1/h]	[Pa]
2		10	4	1.)	
3	~1	102	35	1.)	
4	~10	1'020	352	2.	15
5	~100	10'200	3'520	2.	15
6	~1'000	102'000	35'200	1.80	15
7	~10'000	--	352'000	40	10-15
8	~100'000	--	3'520'000	120	10-15

2. Laminar flow air velocity 0.3-0.5 m/s

Infrastructure

The infrastructure is designed and adapted according to customer requirements.



Connection to cooling water, CDA clean dry air



Gas connections, gas abatement systems, scrubbers



Equipment integration
Integration of your process equipment under clean room conditions, connection of all media and start up



Exhaust connections



Airhandling units with temperature, humidity, over pressure controller



Vacuum applications